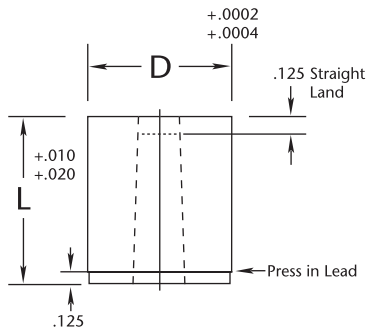


PRECISION DIE BUTTONS

M-2: Rc 60/63 • PM-10V: Rc 61/63 • (A-2, D-2 and M-4 on request)

See page 17 for PRICE LIST

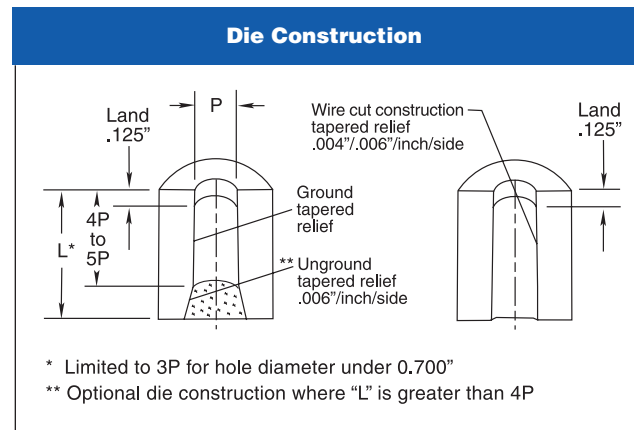
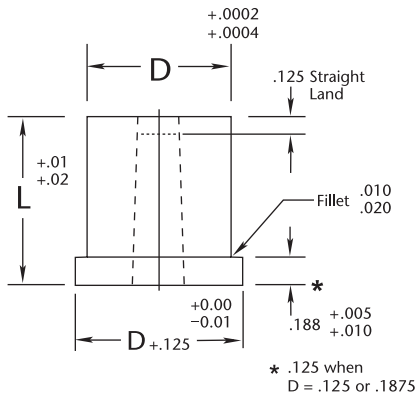
HEADLESS D



Point	Tolerance	Concentricity	
		P to D	T.I.R.
Round	#1 +.0002 -.0	.0003	
	#2 +.0005 -.0	.0005	
Shaped	#1 +.0002 -.0	.0003	
	#2 +.0005 -.0005	.001	

How to check "G"... $G = \sqrt{P^2 + W^2}$

HEADED H



Style P	Style O	Style D
Round 	Oblong 	Dee
Style R	Style K	Style F
Rectangle 	Radius Rectangle (also includes square) 	Flatted Round

How to order: Example

Style	Body Code	Length	Mat.	Pt. Dim. (P x W)	Tol.	Keying	Qty.
DK	37	7/8"	M-2	.109 x .225 R .010	#1	1F	4
HO	50	1"	M-2	.250 x .375	#2		6

- When ordering please specify style Headless DP, DO, DD, DR, DK or DF; Headed HP, HO, HD, HR, HK or HF
- For additional shapes see page 27